

COVID-19 QUICK DEPLOYMENT BUNDLE

Asset Management

AeroScout® RTLS and Hugs® (MobileView®) users can add Asset Management functionality, including tags and remote installation support



Challenges

Due to the recent COVID-19 outbreak, it is essential for hospitals and nursing departments (ICUs) to quickly identify and track the location of critical equipment such as ventilators. Providing alerts when assets are ready for cleaning increases utilization of these critical assets and ensures they were sent for cleaning before they are released for use.

Solution

STANLEY Healthcare’s AeroScout Asset Management solution is a Real Time Location System (RTLS) that automatically monitors and manages the location and status of critical equipment throughout hospitals and healthcare facilities.

Our RTLS Asset Management solution provides real-time location information to ensure critical assets are on-hand and available for use. The Asset Management solution also provides historical information to hospital administrators and health and safety professionals to ensure that patients are not exposed to improperly sanitized equipment or devices. Providing enterprise-wide visibility is particularly important for hospitals that share equipment and devices between buildings and sites. Real-time alerts can improve utilization of assets and ensure they are cleaned between use on different patients.

How It Works



TAG

Active tags are placed on mobile, valuable equipment



MONITOR

Asset location and status are automatically logged and monitored using MobileView



FIND & ALERT

Easily locate assets and configurable real-time alerts via PCs and mobile devices

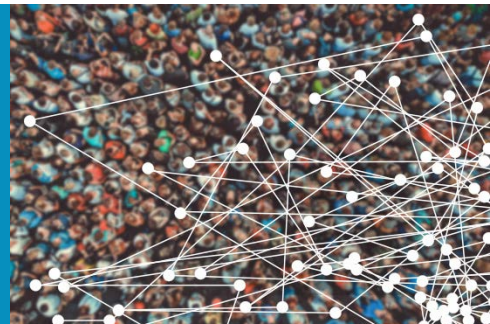


REPORTING

Analytics to help understand inventory levels, PAR level performance and utilization

COVID-19 RESPONSE LIMITED-TIME OFFER*

To support the needs of our customers as they work to reduce the spread of COVID-19 while caring for infected patients, we have developed a special time-limited package that enables you to quickly deploy our Asset Management solution for tracking and managing the location of essential equipment. Bundles to support 40, 100 and 200 assets are available. This bundle is available to current AeroScout RTLS and Hugs (MobileView) customers.



Deployment

We have designed a simplified and remote implementation process that enables hospitals and healthcare facilities to quickly take advantage of our RTLS Asset Management solution. This enables you to be fully operational on an accelerated schedule.

Conditions

- Offering is intended for existing STANLEY Healthcare customers with MobileView already installed who are not currently using Asset Management
- Intended for installation in locations such as the ICU and ED/Trauma, with potential Out-of-bounds alerts
- Offering is intended for ventilators or other critical assets that will not exceed 40, 100 or 200 in quantity per appropriate package
- Support services will be delivered remotely
- Requires remote access by STANLEY Healthcare to the MobileView server;
- Deployment on existing Hugs environment may require an additional/separate MobileView server, which may be virtual
- The bundle does not include Tuning Services and/or Location Optimization; location accuracy is dependent upon the characteristics of the customer's Wi-Fi network, including Access Point (AP) density and network design
- Tags will be preconfigured by STANLEY Healthcare
- User training provided for Tag placement and mounting, and operation to include Tag check-in and check-out
- Includes Software Maintenance fees for the first year

CONTACT US

Contact your STANLEY Healthcare Client Executive to learn more or call

+1-888-622-6992

INTERNATIONAL

+44 (0)1753 500608

*DISCLAIMER

All product and pricing offerings are subject to a mutually-agreed quote and acceptance by STANLEY Healthcare of customer's purchase order. STANLEY Healthcare reserves the right to set criteria for this promotion based on factors including, but not limited to, contractual terms and product availability. The offer period begins on April 1, 2020 and expires on June 30, 2020. Customer must submit a purchase order to STANLEY Healthcare no later than June 30, 2020. This offer may not be applied retroactively for orders placed prior to April 1, 2020. STANLEY Healthcare reserves the right to modify or cancel this offer at any time without notice. Offer valid for customers only in the United States, Canada and other selected geographies.



About STANLEY Healthcare

Over 15,000 hospitals and senior living communities rely on STANLEY Healthcare solutions to empower caregivers to deliver better care. STANLEY Healthcare is a part of Stanley Black & Decker and a proud supporter of the Alzheimer's Association®. Learn more at stanleyhealthcare.com.